

# SiGREEN

Siemens 4IR Lighthouse Factories as test bed  
for decarbonization of products and supply chains

Dr. Florian Albrecht, Siemens AG

AIOTI Signature Event 2023, Brussels, 10.10.2023



**SIEMENS**

# Demand for transparency on product level is increasing

## Why companies need to understand emissions related to their products

Responsibility

Public pressure

CO<sub>2</sub> Tax

Comp. Advantage



Over 90% of emissions originate in complex and distributed supply chains.<sup>1</sup>

SIGREEN works with



SIEMENS

1) Carbon Disclosure Project 2021

# Moving from carbon footprint reporting to active PCF management

## How dynamic PCFs turn carbon footprints into a management tool

### From static PCF reporting...

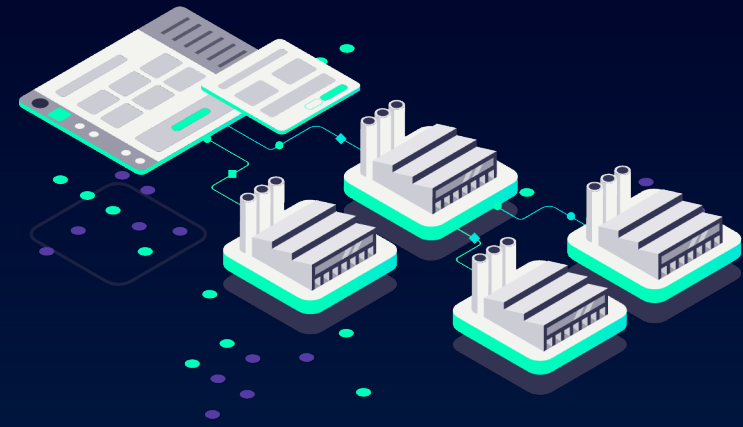
Conventional data base approach



- With up to 90% supply chain emissions, most of the PCF is based on **static database averages**
- (Sub-) supplier **improvements are disconnected** from a manufacturer's PCF
- The same (sub-) supplier **material is calculated multiple** times by different manufacturers

### ...to dynamic PCF management

SiGREEN PCF chaining approach



- Efficient communication allows for **frequent and pro-active updates** that create dynamic PCF
- (Sub-) suppliers' improvements quantify in PCFs, making them a **management tool**
- Dynamic PCF enable **precise target setting** and **efficient reduction measures** with **quantifiable impact**

# SiGREEN works with established data ecosystems and standards

## How SiGREEN connects you to partners as well as IT and OT infrastructure

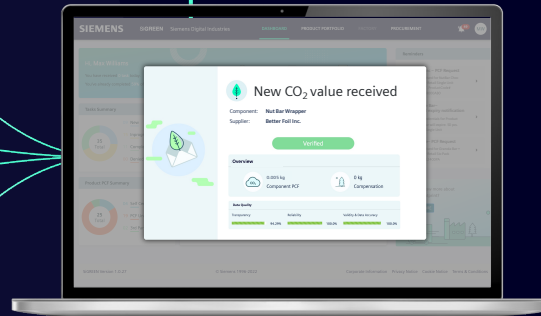


SiGREEN works with open data ecosystems and standards...



... to enable collaboration with your partners up- and downstream

# SiGREEN



- Full-featured Software as a Service application that works standalone as well as integrated with your system landscape (option)
- Requesting, aggregating and sharing of trustworthy PCF data as basic features free of charge
- Support of all relevant data formats and ecosystems
- Made for scaling along your supply chains: Lean supplier self onboarding without installation

### Connect Option

Integration for autom. data collection and gate-to-gate PCF calculation

SiGREEN ~~X~~ Link\_API

SiGREEN ~~X~~ Dev\_API



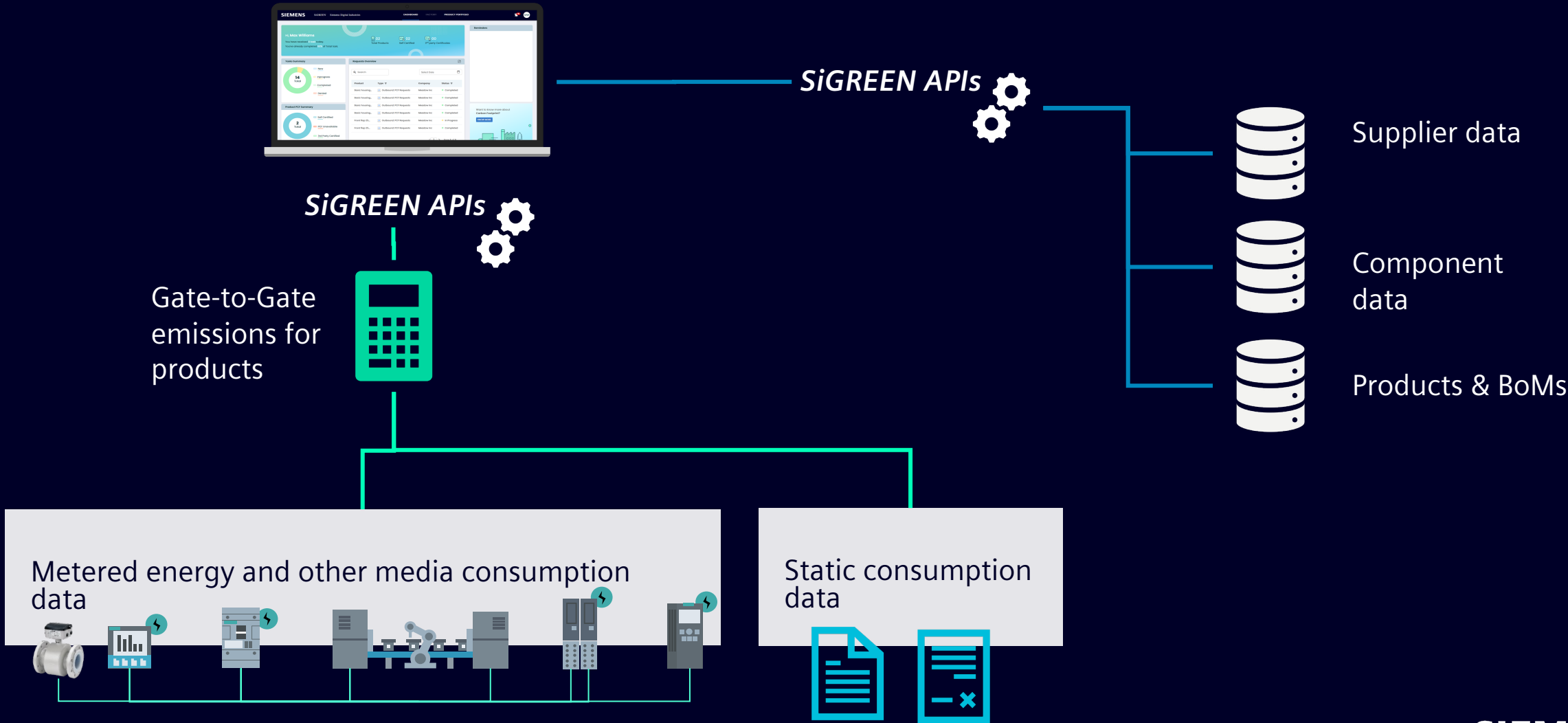
ERP systems | 3rd party software

Multi-standard compliant | cross-industrial

Leveraging Siemens' industry expertise

1) Interface development in progress

# SiGREEN Connect is developed in our factories in Fürth and Amberg leveraging the OT and IT connectivity



# Your SiGREEN contact



**Dr. Florian Albrecht**

**Siemens SiGREEN**

Strategy

Mobile: +49 173 142 1592

Mail: [albrecht.florian@siemens.com](mailto:albrecht.florian@siemens.com)

## Disclaimer

© Siemens 2023

Subject to changes and errors. The information given in this document only contains general descriptions and/or performance features which may not always specifically reflect those described, or which may undergo modification in the course of further development of the products. The requested performance features are binding only when they are expressly agreed upon in the concluded contract.

All product designations may be trademarks or other rights of Siemens AG, its affiliated companies or other companies whose use by third parties for their own purposes could violate the rights of the respective owner.